

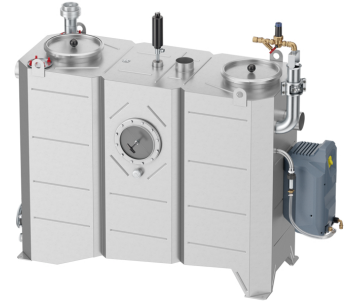
Lipujet-S-OM Extension stage 2

Product information for the product group

ACO Product benefits

- Odour-free emptying, cleaning and filling
- Hydromechanical high-pressure cleaning – only a cold-water connection required
- Can be equipped with an disposal pump
- Minimises disposal and maintenance costs thanks to economic step increases in nominal size
- Small delivery dimensions
- Low weight

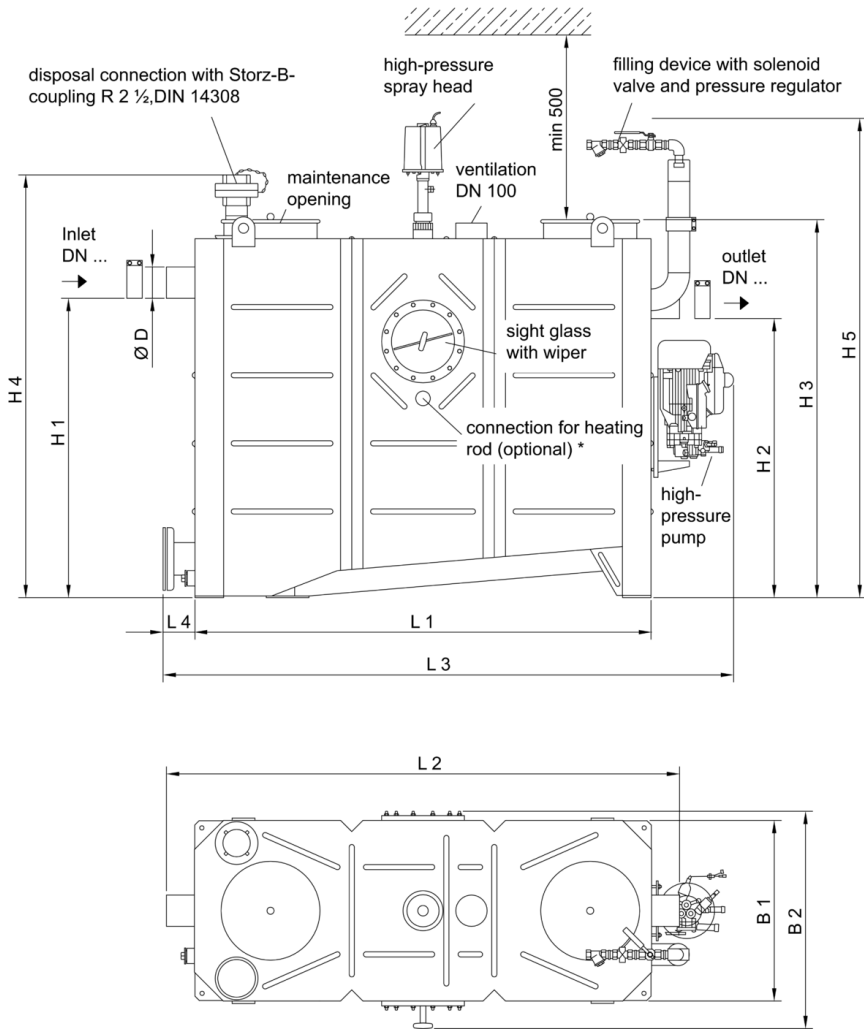
- Grease separator plant as per DIN EN 1825 and DIN 4040-100
- For indoors installation – frost free
- With integrated sludge trap
- Operating side: right/left
- Draining connection, fire hose quick coupling B 2½"
- Suction and emptying sump with drain plug socket 1"
- Inspection window with wiper
- Manual operation of the high pressure internal cleaning with pump
 - Nominal pressure: 175 bar
 - Capacity: 11,6 l/min
 - Chopping, mixing, rinsing in one process
- Odour-proof maintenance opening
 - Diameter: 300 mm for NS 1 – 4
 - Diameter: 500 mm for NS 5.5 – 10
- Filling device with ball valve (connection ¾") for manual refilling
- Electrical connector: 400 V/50 Hz/4,2 kW



Item Technical Data 7573.74.41

Nominal size	Nominal width	Contents			Weight		Operation side
		Sludge trap	Grease store	Overall	Empty	Full	
		[l]	[l]	[l]	[kg]	[kg]	
NS 3	DN 100	300	150	630	190	820	Right-hand

Dimensions



displayed:
 NS4, operating side right
 operating side left would show all component
 (disposal connection, sight glass) positioned
 mirror-inverted to axis.






* not included in the scope of delivery

Nominal size

Dimensions

	L1	L2	L3	L4	H1	H2	H3	H4	H5	B1	B2	D
	[mm]	[mm]	[mm]	[mm]	[mm]	[mm]	[mm]	[mm]	[mm]	[mm]	[mm]	[mm]
NS 3	1255	1450	1670	115	1055	985	1320	1500	1700	695	760	110

Accessories

	Description	Used with	Weight [kg]	Item number
	Sampling pot DN 100 <ul style="list-style-type: none"> ■ Stainless steel, material grade 316 ■ Round shape ■ Gradient drop: 70 mm ■ For installation in DN 100 horizontal pipes coming from grease separator ■ With EC connector and claw ■ Connections tested to DIN EN 877 	<ul style="list-style-type: none"> ■ Grease separator LipuJet-S/Lipator-S <ul style="list-style-type: none"> <input type="checkbox"/> NS 1 – 4 ■ Starch separator Fapujet-S <ul style="list-style-type: none"> <input type="checkbox"/> NS 0.5 – 1 ■ Light oil separator Coalisator-R/-RD <ul style="list-style-type: none"> <input type="checkbox"/> NS 3 	9.9	7300.09.10
	Sampling pot DN 100 <ul style="list-style-type: none"> ■ Stainless steel, material grade 316 ■ Round shape ■ For installation in DN 100 vertical pipes coming from grease separator ■ With EC connector and claw ■ Connections tested to DIN EN 877 	<ul style="list-style-type: none"> ■ Grease separator LipuJet-S/Lipator-S <ul style="list-style-type: none"> <input type="checkbox"/> NS 1 – 4 ■ Starch separator Fapujet-S <ul style="list-style-type: none"> <input type="checkbox"/> NS 0.5 – 1 ■ Light oil separator Coalisator-R/-RD <ul style="list-style-type: none"> <input type="checkbox"/> NS 3 	9.5	7300.10.20
	Viewing window <ul style="list-style-type: none"> ■ Nominal width: DN 200 ■ With screen wiper 	<ul style="list-style-type: none"> ■ Grease separator LipuJet-S-OB/OD/RB/RD 	2.3	7602.00.26
	Filling device <ul style="list-style-type: none"> ■ Free outlet as per DIN 1988 Part 4 ■ For connection to drinking water supply ■ With ball valve R 3/4" 	<ul style="list-style-type: none"> ■ Grease separator LipuJet-S-OB/OD/RB/RD 	2.3	7602.00.25
	Grease layer thickness measuring device <ul style="list-style-type: none"> ■ For electronic measurement of layer of grease ■ Suitable for liquid and/or congealing grease ■ Measuring device with plug and used connecting cable, length: 3 m ■ With two voltage-free changeover contacts to display full warning (80%) and advance warning of fill level (50%) ■ With visual display of fill level ■ With heated probe rod to increase reliability of operation ■ Operating voltage: 230VAC/5 VA ■ Max consumption approx. 12W 	<ul style="list-style-type: none"> ■ LipuJet-P <ul style="list-style-type: none"> <input type="checkbox"/> Oval NS 1 – 10 <input type="checkbox"/> Round NS 2 – 22,5 ■ LipuJet-S <ul style="list-style-type: none"> <input type="checkbox"/> Oval NS 1 – 10 <input type="checkbox"/> Round NS 2 – 20 ■ LipuSmart-P <ul style="list-style-type: none"> <input type="checkbox"/> Oval NS 1 – 10 	2.8	3300.11.50

You can find further accessories under → <https://www.buildingdrainage.aco/search/?q=7573.74.41>