

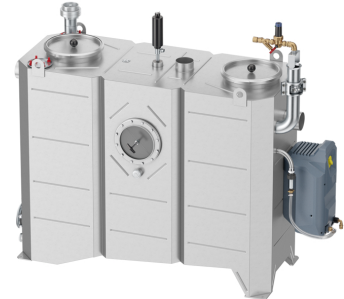
# LipuJet-S-OM Extension stage 2

## Product information for the product group

### ACO Product benefits

- Odour-free emptying, cleaning and filling
- Hydromechanical high-pressure cleaning – only a cold-water connection required
- Can be equipped with an disposal pump
- Minimises disposal and maintenance costs thanks to economic step increases in nominal size
- Small delivery dimensions
- Low weight

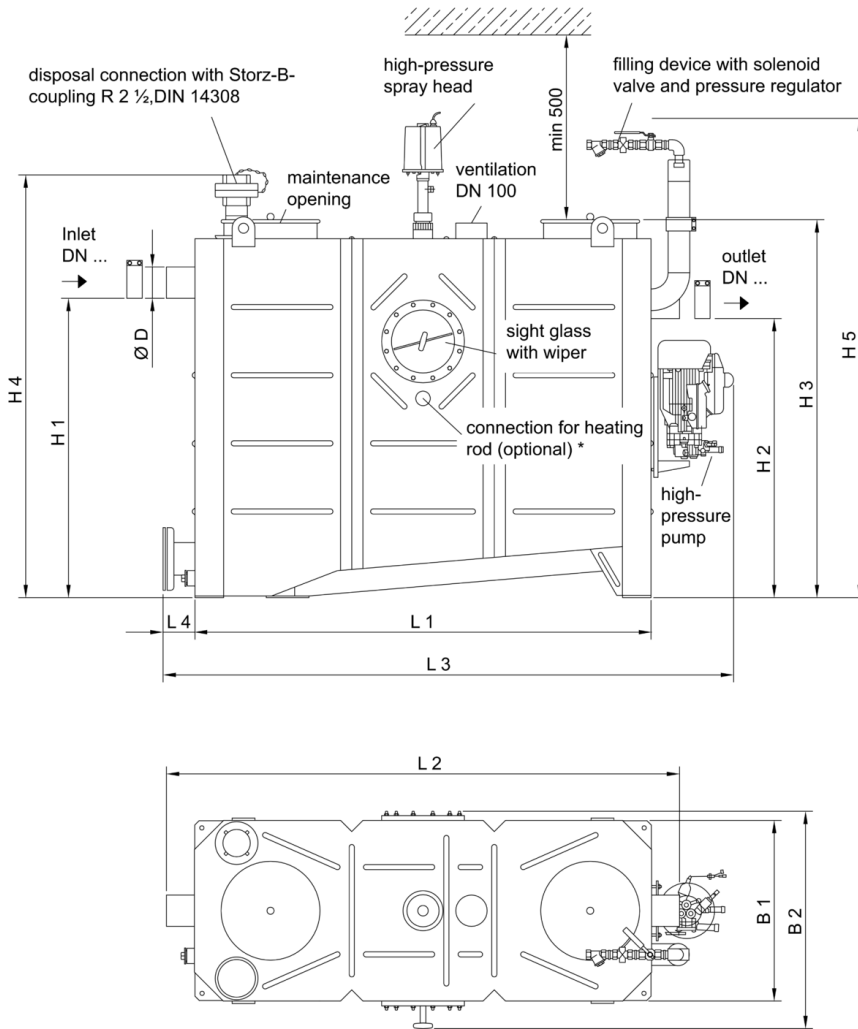
- Grease separator plant as per DIN EN 1825 and DIN 4040-100
- For indoors installation – frost free
- With integrated sludge trap
- Operating side: right/left
- Draining connection, fire hose quick coupling B 2½"
- Suction and emptying sump with drain plug socket 1"
- Inspection window with wiper
- Manual operation of the high pressure internal cleaning with pump
  - Nominal pressure: 175 bar
  - Capacity: 11,6 l/min
  - Chopping, mixing, rinsing in one process
- Odour-proof maintenance opening
  - Diameter: 300 mm for NS 1 – 4
  - Diameter: 500 mm for NS 5.5 – 10
- Filling device with ball valve (connection ¾") for manual refilling
- Electrical connector: 400 V/50 Hz/4,2 kW



## Item Technical Data 7573.74.31

| Nominal size | Nominal width | Contents    |              |         | Weight |      | Operation side |
|--------------|---------------|-------------|--------------|---------|--------|------|----------------|
|              |               | Sludge trap | Grease store | Overall | Empty  | Full |                |
|              |               | [l]         | [l]          | [l]     | [kg]   | [kg] |                |
| NS 3         | DN 100        | 300         | 150          | 630     | 190    | 820  | left           |

**Dimensions**



displayed:  
 NS4, operating side right  
 operating side left would show all component  
 (disposal connection, sight glass) positioned  
 mirror-inverted to axis.






\* not included in the scope of delivery

**Nominal size**

**Dimensions**

|      | L1   | L2   | L3   | L4   | H1   | H2   | H3   | H4   | H5   | B1   | B2   | D    |
|------|------|------|------|------|------|------|------|------|------|------|------|------|
|      | [mm] | [mm] | [mm] | [mm] | [mm] | [mm] | [mm] | [mm] | [mm] | [mm] | [mm] | [mm] |
| NS 3 | 1255 | 1450 | 1670 | 115  | 1055 | 985  | 1320 | 1500 | 1700 | 695  | 760  | 110  |

## Accessories

|   | Description  | Used with  | Weight<br>[kg] | Item<br>number |
|---|--|--|----------------|----------------|
|    | <b>Sampling pot DN 100</b> <ul style="list-style-type: none"> <li>■ Stainless steel, material grade 316</li> <li>■ Round shape</li> <li>■ Gradient drop: 70 mm</li> <li>■ For installation in DN 100 horizontal pipes coming from grease separator</li> <li>■ With EC connector and claw</li> <li>■ Connections tested to DIN EN 877</li> </ul>  | <ul style="list-style-type: none"> <li>■ Grease separator LipuJet-S/Lipator-S                             <ul style="list-style-type: none"> <li><input type="checkbox"/> NS 1 – 4</li> </ul> </li> <li>■ Starch separator Fapujet-S                             <ul style="list-style-type: none"> <li><input type="checkbox"/> NS 0.5 – 1</li> </ul> </li> <li>■ Light oil separator Coalisator-R/-RD                             <ul style="list-style-type: none"> <li><input type="checkbox"/> NS 3</li> </ul> </li> </ul>  | 9.9            | 7300.09.10     |
|    | <b>Sampling pot DN 100</b> <ul style="list-style-type: none"> <li>■ Stainless steel, material grade 316</li> <li>■ Round shape</li> <li>■ For installation in DN 100 vertical pipes coming from grease separator</li> <li>■ With EC connector and claw</li> <li>■ Connections tested to DIN EN 877</li> </ul>  | <ul style="list-style-type: none"> <li>■ Grease separator LipuJet-S/Lipator-S                             <ul style="list-style-type: none"> <li><input type="checkbox"/> NS 1 – 4</li> </ul> </li> <li>■ Starch separator Fapujet-S                             <ul style="list-style-type: none"> <li><input type="checkbox"/> NS 0.5 – 1</li> </ul> </li> <li>■ Light oil separator Coalisator-R/-RD                             <ul style="list-style-type: none"> <li><input type="checkbox"/> NS 3</li> </ul> </li> </ul>  | 9.5            | 7300.10.20     |
|    | <b>Viewing window</b> <ul style="list-style-type: none"> <li>■ Nominal width: DN 200</li> <li>■ With screen wiper</li> </ul>   | <ul style="list-style-type: none"> <li>■ Grease separator LipuJet-S-OB/OD/RB/RD</li> </ul>   | 2.3            | 7602.00.26     |
|  | <b>Filling device</b> <ul style="list-style-type: none"> <li>■ Free outlet as per DIN 1988 Part 4</li> <li>■ For connection to drinking water supply</li> <li>■ With ball valve R 3/4"</li> </ul>  | <ul style="list-style-type: none"> <li>■ Grease separator LipuJet-S-OB/OD/RB/RD</li> </ul>   | 2.3            | 7602.00.25     |
|  | <b>Grease layer thickness measuring device</b> <ul style="list-style-type: none"> <li>■ For electronic measurement of layer of grease</li> <li>■ Suitable for liquid and/or congealing grease</li> <li>■ Measuring device with plug and used connecting cable, length: 3 m</li> <li>■ With two voltage-free changeover contacts to display full warning (80%) and advance warning of fill level (50%)</li> <li>■ With visual display of fill level</li> <li>■ With heated probe rod to increase reliability of operation</li> <li>■ Operating voltage: 230VAC/5 VA</li> <li>■ Max consumption approx. 12W</li> </ul> | <ul style="list-style-type: none"> <li>■ LipuJet-P                             <ul style="list-style-type: none"> <li><input type="checkbox"/> Oval NS 1 – 10</li> <li><input type="checkbox"/> Round NS 2 – 22,5</li> </ul> </li> <li>■ LipuJet-S                             <ul style="list-style-type: none"> <li><input type="checkbox"/> Oval NS 1 – 10</li> <li><input type="checkbox"/> Round NS 2 – 20</li> </ul> </li> <li>■ LipuSmart-P                             <ul style="list-style-type: none"> <li><input type="checkbox"/> Oval NS 1 – 10</li> </ul> </li> </ul> | 2.8            | 3300.11.50     |

You can find further accessories under → <https://www.buildingdrainage.aco/search/?q=7573.74.31>